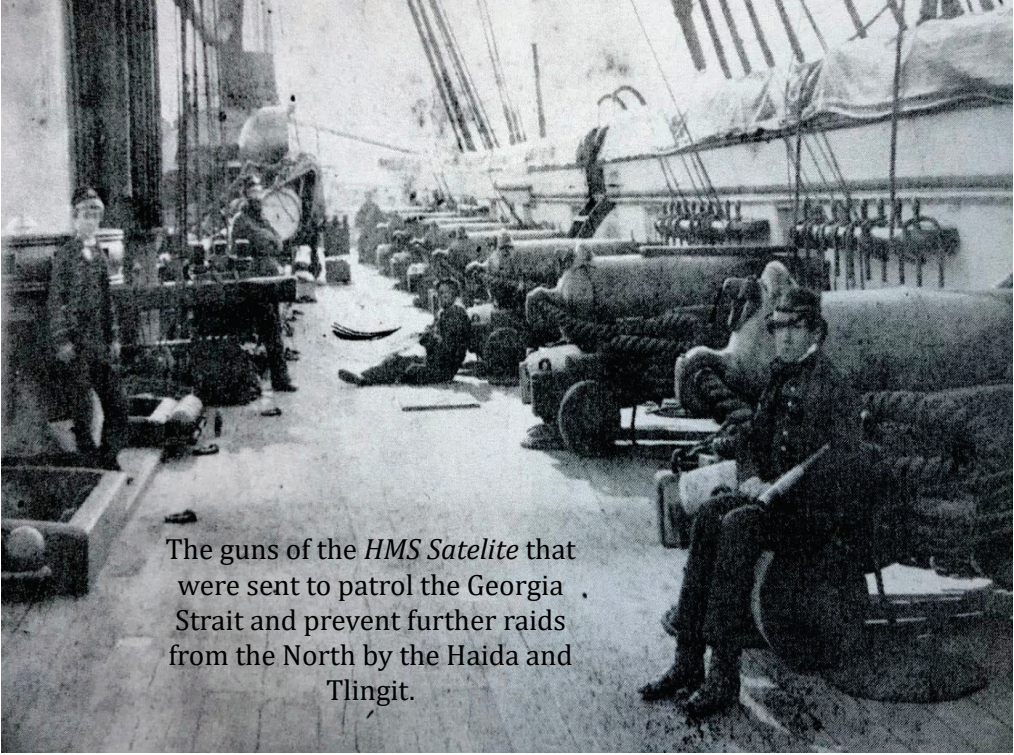


History

The Puget Sound War began over land rights and ended in a cloud of controversy surrounding the hanging of Chief Leschi, who finally chose war to save his Nisqually Tribe's camas fields. The catalyst of the war was the Treaty of Medicine Creek of 1854, negotiated by Washington Territory Governor Isaac Stevens. The treaty preserved Indigenous fishing rights, but took away prime Nisqually farm lands with their prairies of camas, the "potato" of the American Indigenous. Battles occurred in present-day Tacoma, Seattle, and even as far east as Walla Walla. Leschi was put on trial that resulted in a hung jury; the judge had instructed the jury that killing of combatants during wartime did not constitute murder. On February 19, 1858 Chief Leschi was hanged on gallows near Lake Steilacoom.

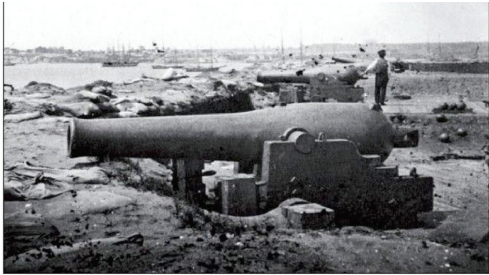
Indigenous peoples engaged in the active management and cultivation of Blue Camas. Controlled burning was employed to clear land and improve growing conditions. While plots occurred naturally in the Northwest, Indigenous Peoples would maintain a plot through the planting and harvesting of Camas bulbs, as well as by tilling and weeding. Camas plots were harvested by individuals or kin-groups, who were recognized as a particular plot's cultivators or stewards. Stewardship was typically lineage-based, and cultivation rights to a particular plot were fiercely guarded. Multiple generations would often harvest the same plot. Plots have been recorded as possessing physical boundary markers and there were social consequences for harvesting from a plot that was informally recognized as being maintained by others.

[illegible]

The guns of the *HMS Satellite* that were sent to patrol the Georgia Strait and prevent further raids from the North by the Haida and Tlingit.

Legends & Lessons

To suggest the Indians were out-gunned is an understatement. There was nothing romantic about the Indian Wars, but they were not the only wars. Territorial Governor Stevens ordered pioneers to build and use block-houses; some resisted thinking it not necessary. Stevens, who had graduated 1st in his class at Westpoint had them arrested to be tried in a Military



The US Navy steamer *Massachusetts* was a converted merchantman. She was actively involved in the 1855–1856 Indian War and the 1859 Pig War. She visited Olympia during those conflicts. The cannon pictured here was one of eight she sent ashore to US Army captain George Pickett to arm the redoubt at American Camp against the British in 1859.

Court. Territorial Judge Lander held Stevens in contempt and ordered him arrested. Stevens thought this a good idea and jailed the judge. The judge pardoned himself and promptly placed a huge fine on Stevens. Stevens pardoned himself. Washington DC had Stevens depart (deported) to Congress to serve as the Territory's Delegate and later die, at the Battle of Chantilly.

Ethnobotanical Gardens

Native plant “starts” from Bonnhoeffer Gardens (to your SW, by the I-5) illustrate 99 foods and materials available to the American peoples who lived here 10,000 years without the need to develop agriculture. Planter boxes contain:

[illegible]

The Farm Museum and Gardens's goal is to provide Washington State public school students a visual, non-lect, introduction to NW Native Land Legenders are stories our ancestors told (to us), their grandchildren, who are now 75 years of age. "History" (as compared to "Text prepared on the dead") is taken from Wikipedia under the Creative Commons Attribution Share-Alike agreements until PLC can develop its unique limited prose. These efforts are now underway with assistance of local school districts and the Stillaguamish Tribe. The Farm Museum and Gardens is a 501(c)(3) non-profit organization. We are a member of the National Plant Data Center, Baton Rouge, LA 70803-6905 USA. Visitors enter under the Revised Code of the State of Washington - RCW 4.24.010 and 4.24.210 allowing public access to viewing and enjoying scenic or scientific sites/ways on private land. Museums and gardens are proposed uses that still require Snohomish County Planning approvals. At present buildings serve as auxiliary storage for PLC's native plants, gardening equipment, and Christmas decorations. Copyright 2019 - 2020 Pichuck Learning