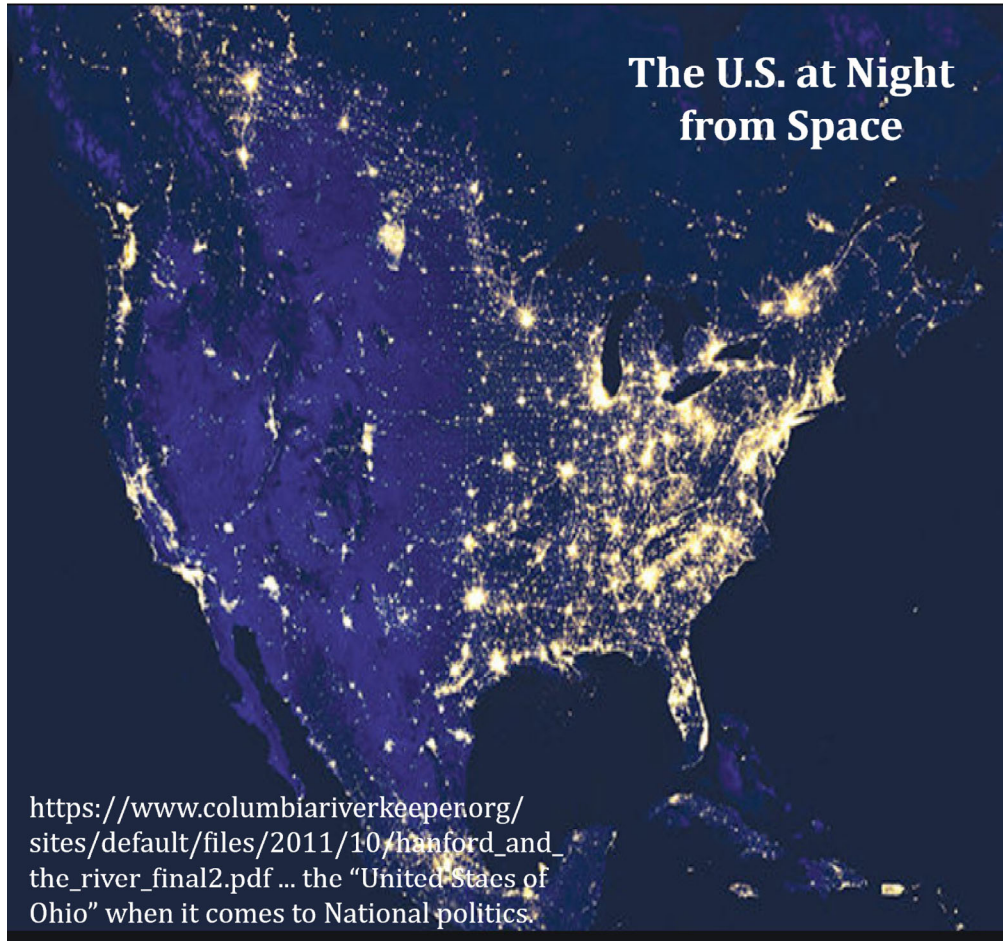


# AN EXTINCTION EVENT?

**Plutonium** *You have walked history from 1775 to WW II; none of present history's (1940-2020) six challenges can be blamed on our ancestors.*

WA State's Hanford site contains ~60% of the nation's high-level radioactive waste with approximately 85% being commercial spent nuclear fuel. It is currently, by far, the most contaminated nuclear site in the U.S. with waste stored in single and double-shell containers on underground railroad flatcars. These cars constantly need upkeep for corrosion; we purchase 20' x 4' and 4" thick stainless steel sheets to create additional "wraps" as the years go by. We have no long-term plan. Iodine-129 has a half-life of 15 million years, Pu-239 24,000 years. If an U.S. nuclear disaster occurs, it would most likely occur 200 miles from where you stand. The nighttime photo from Space illustrates why most in America consider this a distant problem.



[https://www.columbiariverkeeper.org/sites/default/files/2011/10/hanford\\_and\\_the\\_river\\_final2.pdf](https://www.columbiariverkeeper.org/sites/default/files/2011/10/hanford_and_the_river_final2.pdf) ... the “United States of Ohio” when it comes to National politics.

## Ethnobotanical Gardens

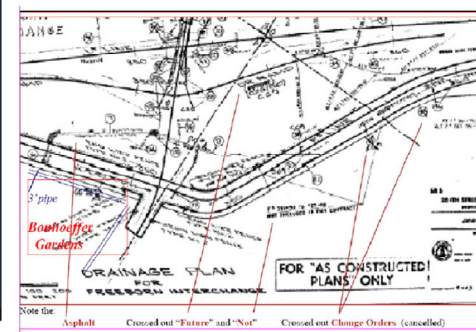
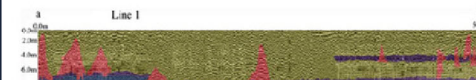
Native plant “starts” from Bönhoeffer Gardens (to your SW, by the I-5) illustrate 99 foods and materials available to the American peoples who lived here 10,000 years without the need to develop agriculture. Planter boxes contain:

The Farm Museum and Garden's goal is to provide Washington State public school children a visual, non-text, introduction to NW History. Local Legends are stories our ancestors told to their grandchildren, who are now 75 years of age. "History" (as compared to "fact") prepared on the dead? It is taken from Wikipedia under the Creative Commons Attribution Share-Alike license. Visitors enter under the Revised Code of the State of Washington - RCW 4A.200-0 . & 4.24 without assistance of local school districts and the Stillaguamish Tribe. Plant facts are taken from various web sites by attribution. U.S. Dept. of Agriculture, National Plant Data Center, Baton Rouge, LA 70874-4906 USA. All visitors enter under the Revised Code of the State of Washington - RCW 4A.200-0 . & 4.24 without assistance of local school districts and the Stillaguamish Tribe.

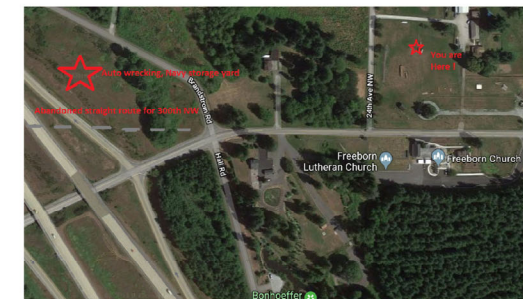
**Before Larry's - 1947**  
a parking lot look familiar to anyone who has served  
military communities under heavy metal precipitation post downtown Wash?



**Figure 4: GPR Survey Line 1 From PVC Pipe Area Towards 300<sup>th</sup> Street NW**



300th NW, the street behind you, ran straight west between the Farm and Church and passed the “depot” shown at the left before the freeway was built. The depot was used as a truck stop in the building of Whidbey Island Naval Base (where “heavies,” nuclear weapons, are stored ... there is no railroad on Whidbey Island). The 1st Change Order for building Exit 215 was the cancellation of the clean-up contract of a “dirty site” by the north-bound on-ramp. Sonic surveys show the soil covered battery and muffler piles and soil testing downstream shows large amount of nickel, lead and “alphas and betas.” One doesn’t have to go far to find a nuclear waste dump.



Stanwood draws 2 out of every 3 cups of water from the West Fork of Freeborn Church Creek. Most other County cities use Snohomish PUD's water.